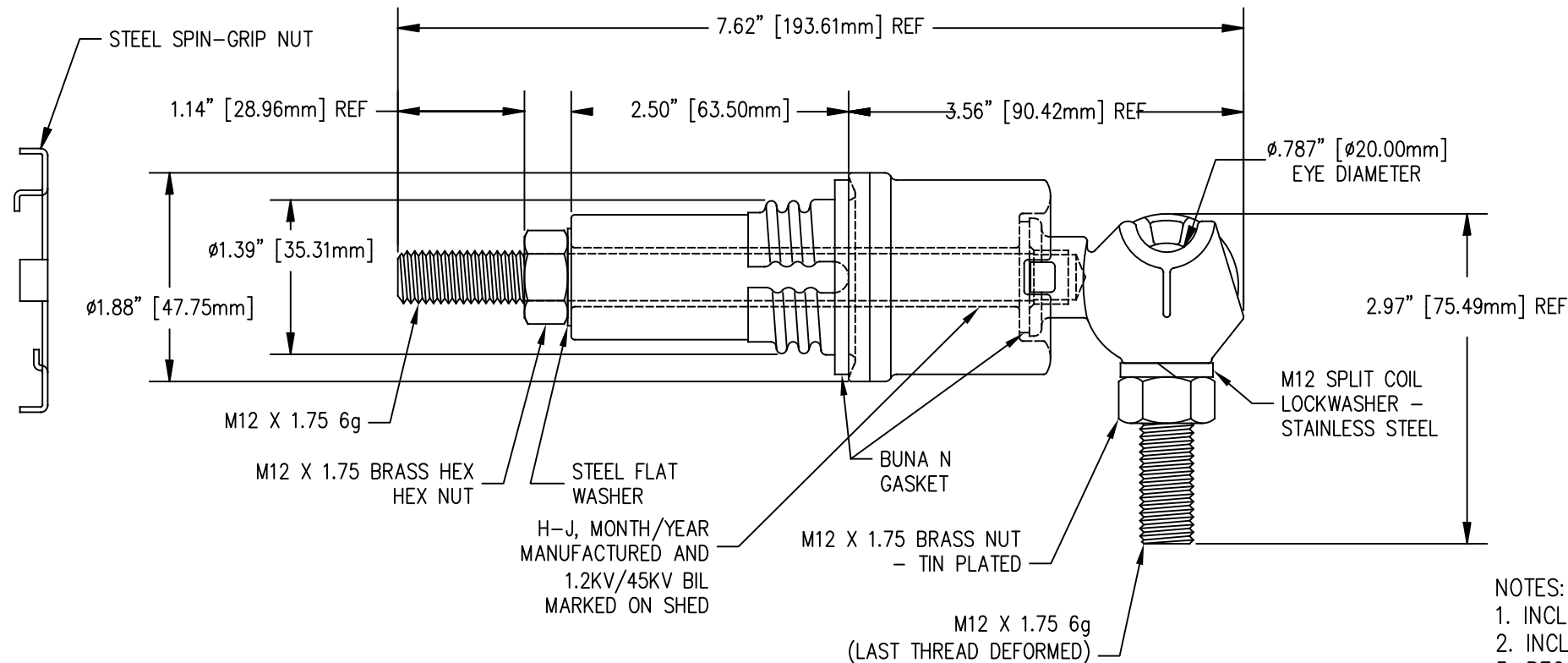
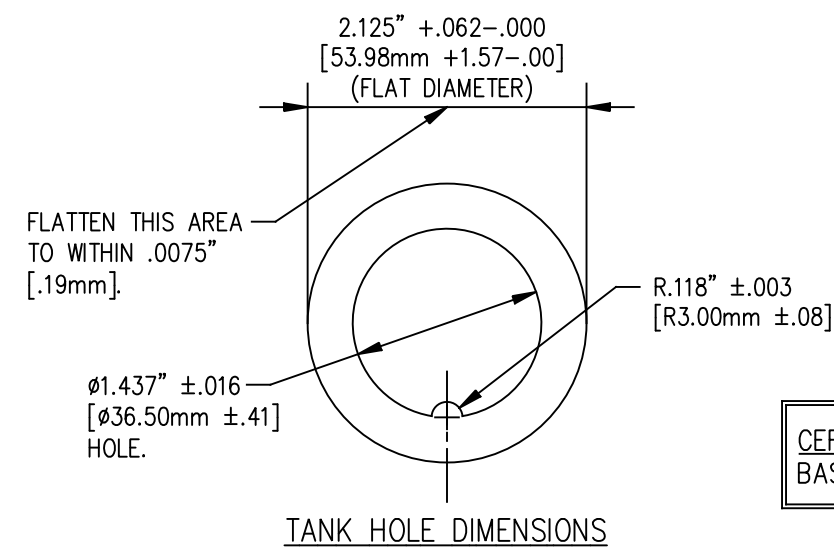


REVISIONS					
NO.	DATE	ECN #	REMARKS	BY	APPD.
△	3/20/2019	HJ19-049	UPDATED LAPEM CERTIFICAION	TJF	LO



- NOTES:
1. INCLUDE TWO EXTRA BRASS HEX NUTS
  2. INCLUDE TWO EXTRA BRASS WASHERS
  3. RECOMMENDED INSTALLATION TORQUE LEVEL OF MOUNTING NUT IS 23±1 FT/LBS

- PORCELAIN NOTES:
1. WET PROCESS ELECTRICAL PORCELAIN
  2. GREY GLAZE MUNSELL 5BG 7.0/0.4
  3. TOLERANCE ±3% WITH NOTHING LESS THAN ±.03
  4. PORCELAIN IS INSPECTED TO H-J ENTERPRISES INSPECTION GUIDELINES AND STANDARDS DOCUMENT P0161997
  5. CREEP DISTANCE (MIN).....1.81"[46.00mm]



MATERIAL:  
 STUD - COPPER CDA 11000  
 BODY - CDA 84400 - TIN PLATED  
 EYEBOLT - CDA 95500 - TIN PLATED

△  
 CERTIFIED BY CFE/LAPEM (CFE E2C045-0500)  
 BASED ON MEXICAN STANDARD CFE 53100-84

TOLERANCES (EXCEPT AS NOTED)			<b>H-J ENTERPRISES, INC.</b> 3010 HIGH RIDGE BLVD. HIGH RIDGE, MO. 63049 USA PHONE 1-636-677-3421 FAX 1-636-376-1915		
DECIMAL	±.032"/.8mm		1.2KV/45KV BIL/500A CONTAMINATED AMBIENT		
FRACTIONAL	±		MATERIAL (SEE NOTES)		
3RD ANGLE PROJ	ANGULAR ±2'	DRAWN BY	DATE	SCALE	DRAWING NO.
		CJT	10-16-07	N.T.S.	MAS0107-005